

Digital Printing(POP), On-Demand Automatic
Single Side Roll Laminator



PROTOPIC ECO-520

Single Side Laminator Built-In Pneumatic Controlled Feed Gate
Automatic Feeding, High Pressured Laminating, Automatic Bursting System
Laminating Speed : 10m/min
MAX. Paper Size : (W) 520mm x (L) 720mm

※GMP Thermalami Patented



▶ Scratch-Free Matt Film



▶ Embossing Textured Laminating Film

Laminator
installed with
Embossing Roller

Heat Pressing &
Embossing for Thermalami



POLYNEX Film



- Environmental-Friendly "Thermalami" System that needs no adhesive
- Laminating of the highest grade giving perfect adhesion with all kinds of printed material
- Compact Design Save For Valuable Office Space
- Built-In Air Compressor Designed Lightweight & Low Noise
- Equipped Paper Cutting Device by Pneumatic cylinder Bursting Mode
- Automatic System By Manual Paper Feeding To Automatic Alignment & Bursting
- Pneumatically controlled feed gate and Bursting System
- Easy To Exchange Rollers(Approx. 20min. Only!!)
- Delicated Effects by Embossing Roller(Optional)

PROTOPIC ECO-520

www.gmp.com

▶ ISO 9001:2000 Certificate



▶ ISO 14001 Certificate



▶ RoHS Certificate



▶ UL-WTDP, CB-TMP Lab. Certificate



KOSDAQ Registered Corporation(NO. 018290)

GMP GMP CO., LTD.



PROTOPIC ECO-520

PROTOPIC ECO-520 enables you to do laminating and to get excellent Embossing Effects.

PROTOPIC ECO-520 is suitable for Laminex shops, small printing shops, photo studios and advertising companies.

In addition, any business shops who deals with bookcovers, filecovers, postal cards and pamphlets, can not lose it!

Features

- Equipped Adjustment Device For Precise Tension of Film
- Equipped Decurling Device To Control Easier
- Perforating Wheel To Use Easier
- Ball Bearing Type To All Driving Parts
- Sliding Panel
- Strong Torque Motor & Driving Circuit
- Equipped Infrared Temperature Sensor
- Built-In Air Compressor Designed Lightweight & Low Noise
- Available POLYNEX(OPP) Film



Type of embossing patterns

- ▶ Various types of embossing offer high quality and capacity on demand



· Linen Texture



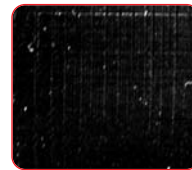
· Fine Texture



· Leather



· Sparkler



· Silky Texture



· Hair Line

POLYNEX Thermalami Film(OPP)

POLYNEX Thermal Gloss - 20	ECONOMIC Gloss Film
POLYNEX Thermal Gloss - 25	Gloss Film
POLYNEX Thermal Pure Gloss - 20	Pure Gloss Film
POLYNEX Thermal Matt - 22	ECONOMIC Matt Film
POLYNEX Thermal Matt - 28	Matt Film
POLYNEX Thermal Pure Matt - 22	Pure Matt Film
POLYNEX Thermal Gloss Emboright - 40	Embossing & High gloss Film
POLYNEX Thermal Matt Antiscuff - 31	Scuff-free matt Film
POLYNEX Thermal Gloss Digital Supermelt - 40	Digital Print Supermelt Gloss Film
POLYNEX Thermal Matt Digital Supermelt - 43	Digital Print Supermelt Matt Film
POLYNEX Thermal Hologram - 40	Hologram Film
POLYNEX Thermal Silver Gloss - 40	Silver Color film for Embossing Laminating



Specifications

Model Name		PROTOPIC ECO-520	
Max. Laminating Speed	10m / min	Max. Laminating Temperature	140℃ MAX.
Max. Sheet Format	520(W) X 720(L)mm	Temperature Control	Time Proportion Control
Min. Sheet Format	210(W) X 250(L)mm	Operating System	Micro processor
Laminating Film	POLYNEX Film(OPP Base Thermalami Film)	Nip Pressure	Manual (lever)
Thickness of Substrate(Paper)	80~400g/㎡	Film Core	77Combi core
Power Requirements	AC 220V-240V, 50/60Hz	Laminator Dimensions	758(W)x1900(L)x605(H)mm
Power Consumption	2550W	Feeding	Timing control gate
Warm up Time	10min	Cutting	Bursting with perforator
Heating System	Hot Roller Internal Infrared Heater		

GMP reserves the right to after change specifications without prior notice.