



# Suitable for Small Volume & Various Material Laminating Process

## PIONEER-700M Series

Laminating Speed : 40m/min  
 Feeding & Bursting Speed : 6,000Sheet/hrs  
 MAX. Paper Size : 700(W)\*500(L)mm

▷ PIONEER-700M G20N  
 ▷ PIONEER-700M G20R15

### ※GMP Thermalami Patented

▶ Scratch-Free Matt Film

▶ Embossing Textured Laminating Film

Laminator installed with Embossing Roller

Heat Pressing & Embossing for Thermalami



Index  
 • G20= GMP Stream Feeder 20  
 • N= Nicking Knife  
 • R15= Rotary Knife 15

**Electric Induction Heating Roller System**  
 Precise Temperature Control ( $\pm 1^{\circ}\text{C}$ )  
 Speedy Heating-Up  
 Long Life



POLYNEX Film

- Embossing Laminating with Excellent Adhesive Strength & No Silvering
- Environmental-Friendly "Thermalami" System that no needs adhesive.
- High Quality Laminating with Perfect Adhesion for Whole Kinds of Materials
- Feeding Device with Servo Drive & Alignment System
- Maximize the Value of Laminated Result with Hot Spot Stamping or Different Patterned Embossing
- Increase the Value-added Effect with Various kinds of Films and Special Effect
- Perfect Laminating with Excellent Chromogenic Result and No Air Bubble



JOGGING Table

**PIONEER-700M Series**

www.gmp.com



KOSDAQ Registered Corporation( NO. 018290)





# PIONEER-700M Series

Single side Laminator with a Laminating speed of 40m/min,  
Automatic feeding, Nicking, Slitting, Rewinder  
Automatic Burster, Jogging Table(Optional), Embossing rollers (Option)

## Jogging Table-Option

- Automatically Jogs the finished output for easy pallet loading



- \* Model : Jogging Table-700
- \* Out-put Height : 130mm
- \* Paper Size(MAX): 700x700mm
- \* Dimensions(WxLxH) : 795 x 820 x 410~545mm
- \* Power Requirements : AC 220V, 60Hz

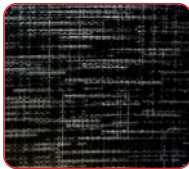


## Type of embossing patterns

► Various types of embossing offer high quality and capacity on demand



• Linen Texture



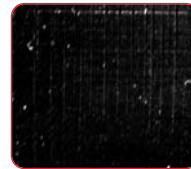
• Fine Texture



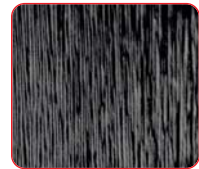
• Leather



• Sparkler



• Silky Texture



• Hair Line

## Thermalami Film

- GMP POLYNEX (OPP Base Thermalami Film)

POLYNEX Thermal Gloss - 20	ECONOMIC Gloss Film
POLYNEX Thermal Gloss - 25	Gloss Film
POLYNEX Thermal Pure Gloss - 20	Pure Gloss Film
POLYNEX Thermal Matt - 22	ECONOMIC Matt Film
POLYNEX Thermal Matt - 28	Matt Film
POLYNEX Thermal Pure Matt - 22	Pure Matt Film
POLYNEX Thermal Gloss Emboright - 40	Embossing & High gloss Film
POLYNEX Thermal Matt Antiscuff - 31	Scuff-free matt Film
POLYNEX Thermal Gloss Digital Supermelt - 40	Digital Print Supermelt Gloss Film
POLYNEX Thermal Matt Digital Supermelt - 43	Digital Print Supermelt Matt Film
POLYNEX Thermal Hologram - 40	Hologram Film
POLYNEX Thermal Silver Gloss - 40	Silver Color film for Embossing Laminating

- GMP NYLONEX (Nylon Base Thermalami Film)

NYLONEX Gloss - 27	Curl & Scratch Free Gloss Film
NYLONEX Matt - 31	Curl & Scratch Free Matt Film
NYLONEX Gloss Digital Supermelt - 40	Curl & Scratch Free Gloss Film for Digital Print
NYLONEX Matt Digital Supermelt - 44	Curl & Scratch Free Matt Film for Digital Print

- GMP PERFEX (OPP Base Thermalami Film)

PERFEX Gloss - 25	Gloss Film
PERFEX Gloss - 38	High gloss & Deep Image Film
PERFEX Matt - 32	Matt Film
PERFEX Matt - 38	Deep image Matt film
PERFEX Sliver - 25	High gloss Silver Film

\* PERFEX Film for Sliver, Gold & UV printing



## Specifications

Model Name	PIONEER-700M Series		
Laminator Dimensions	1,500(W)*2,600(L)*1,340(H)mm	Max. Laminating Temperature	140 °C MAX.
Max. Laminating Speed	40m/min	Temperature Control	PID Control
Max. Feeding Speed	6,000 sheet/hr	Operating System	Motion Control System
Max. Sheet Format	700(W)*500(L)mm	Main Driving	Parker 3.7kw Induction Motor with Vector Driver
Min. Sheet Format	210(W)*250(L)mm	Feeder Driving	Parker 0.4kw Induction Motor with Vector Driver
Laminating Film	POLYNEX, NYLONEX, PERFEX	Nip Pressure	Pneumatic Cylinder
Thickness of Substrate(Paper)	120~400g/ m <sup>2</sup>	Film Core	Air Shaft (3")
Feeder Loading Height	480mm	Cooling System	Air Cooling with Blower
Power Requirements	AC 380~400V, 3N, 50/60Hz	Feeding	GMP Syncro Stream Feeder
Power Consumption	28 kw	Cutting	Burst Cutting with Nicking Knife, Perforator
Warm up Time	15min	Weight	1,200kg
Heating System	Induction Heating System		

GMP reserves the right to after change specifications without prior notice.