



# Laminating for Digital printing On-demand bookbinding

## EUROLAM-520 Series

Laminating Speed : 30m/min  
 Feeding & Bursting Speed : 6,000 sheets/hr  
 Max. Paper Size : 520(W)\*720(L)mm

- ▷ EUROLAM-520 G10P
- ▷ EUROLAM-520 G10P-ST40
- ▷ EUROLAM-520DUAL G10P
- ▷ EUROLAM-520DUAL G10P-ST40

### ※GMP Thermalami Patented

▶ Scratch-Free Matt Film

▶ Embossing Textured Laminating Film

Laminator installed with Embossing Roller

Heat Pressing & Embossing for Thermalami

**Index**  
 • G10= GMP Stream Feeder 10  
 • P= Perforator      • ST= Auto Stacker



POLYNEX Film

**Electric Induction Heating Roller System**  
 Precise Temperature Control ( $\pm 1^{\circ}\text{C}$ )  
 Speedy Heating-Up  
 Long Life

- Environmental-Friendly "Thermalami" System that needs no adhesive
- Laminating of the highest grade giving perfect adhesion with all kinds of printed material
- Laminating system for digital on-demand publishing system
- Perfect solution for all range of on-demand digital printing system
- Suitable for massive operation (Laminating Speed : Max. 30m/min)
- Full automatic laminating system (Feeding, Laminating, Cutting)
- Small and Medium volume work available with Jogging Table -(Option)
- Best Reliable & Durable by PLC and Servo Control System



**EUROLAM-520 Series**

www.gmp.com

ISO 9001:2000 Certificate    ISO 14001 Certificate    RoHS Certificate    UL-WTDP, CB-TMP Lab. Certificate

KOSDAQ Registered Corporation( NO. 018290)





# EUROLAM-520 Series

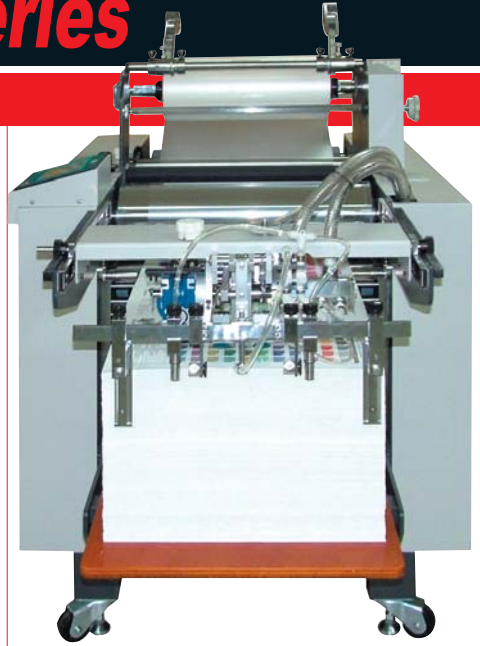
**EUROLAM-520 Series** is a single side laminator with environmental-friendly "Thermalami" system that needs no adhesive. It is suitable for small and medium volume of work and is available for feeding, laminating and cutting by automatic system. And it will ensure the exact paper feeding space as well as reliable durability.

## Jogging Table-Option

- Automatically Jogs the finished output for easy pallet loading



- Model : Jogging Table-700
- Out-put Height : 130mm
- Paper Size(MAX): 700x700mm
- Dimensions(WxLxH) : 795 x 820 x 410~545mm
- Power Requirements : AC 220V, 60Hz

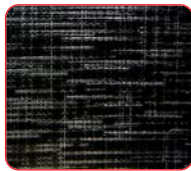


## Type of embossing patterns

- Various types of embossing offer high quality and capacity on demand



• Linen Texture



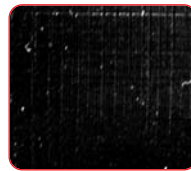
• Fine Texture



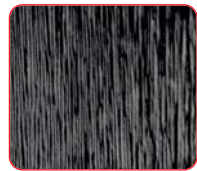
• Leather



• Sparkler



• Silky Texture



• Hair Line

## POLYNEX Thermalami Film(OPP)

POLYNEX Thermal Gloss - 20	ECONOMIC Gloss Film
POLYNEX Thermal Gloss - 25	Gloss Film
POLYNEX Thermal Pure Gloss - 20	Pure Gloss Film
POLYNEX Thermal Matt - 22	ECONOMIC Matt Film
POLYNEX Thermal Matt - 28	Matt Film
POLYNEX Thermal Pure Matt - 22	Pure Matt Film
POLYNEX Thermal Gloss Emboright - 40	Embossing & High gloss Film
POLYNEX Thermal Matt Antiscuff - 31	Scuff-free matt Film
POLYNEX Thermal Gloss Digital Supermelt - 40	Digital Print Supermelt Gloss Film
POLYNEX Thermal Matt Digital Supermelt - 43	Digital Print Supermelt Matt Film
POLYNEX Thermal Hologram - 40	Hologram Film
POLYNEX Thermal Silver Gloss - 40	Silver Color film for Embossing Laminating



## Specifications

Model Name	EUROLAM-520 Series		
Laminator Dimensions	940(W)*2,600(L)*1257(H)mm	Heating System	Induction Heating System
Max. Laminating Speed	30m/min	Max. Laminating Temperature	140 °C
Max. Feeding Speed	6,000 sheet/hr	Temperature Control	PID Control
Max. Sheet Format	520(W)*720(L)mm	Operating System	Motion Control System
Min. Sheet Format	210(W)*250(L)mm	Main Motor	Parker 2.2kw Induction Motor with Vector Driver
Laminating Film	POLYNEX, NYLONEX, PERFEX	Feeder Motor	Parker 0.2kw Servo Motor
Thickness of Substrate(Paper)	120~400g/㎡	Nip Pressure	Pneumatic Cylinder
Feeder Loading Height	400mm	Film Core	Core Adapter (3")
Power Requirements	AC 380~400V, 3N, 50/60Hz	Cooling System	Air Cooling with Blower
Power Consumption	12 kw	Feeding	GMP Syncro Stream Feeder
Warm up Time	10min	Cutting	Burst Cutting with Perforator

GMP reserves the right to after change specifications without prior notice.